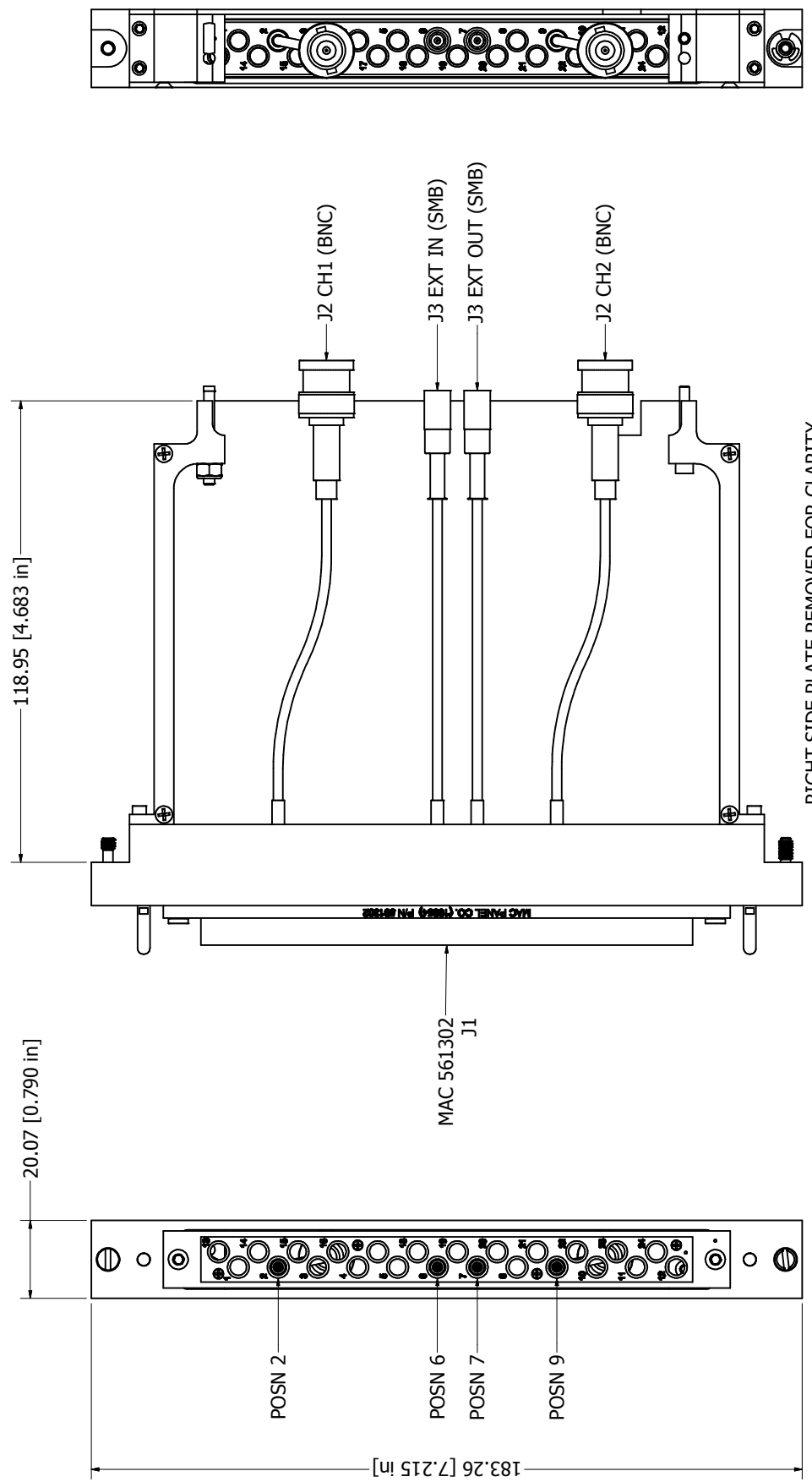


REVISION HISTORY		DATE	APPROVED
REV	DESCRIPTION		
A	RELEASED FOR PRODUCTION	07/25/2008	AO

- NOTES:
1. USE INSTRUCTION SHEET IN91100 FOR ATTACHING DAK TO PXI CARD.
 2. MATING ITA MODULE 561402.
 3. SUPPLIED WITH MOUNTING HARDWARE.
 4. SEE SHEET 3 FOR WIRE LIST.



RIGHT SIDE PLATE REMOVED FOR CLARITY.

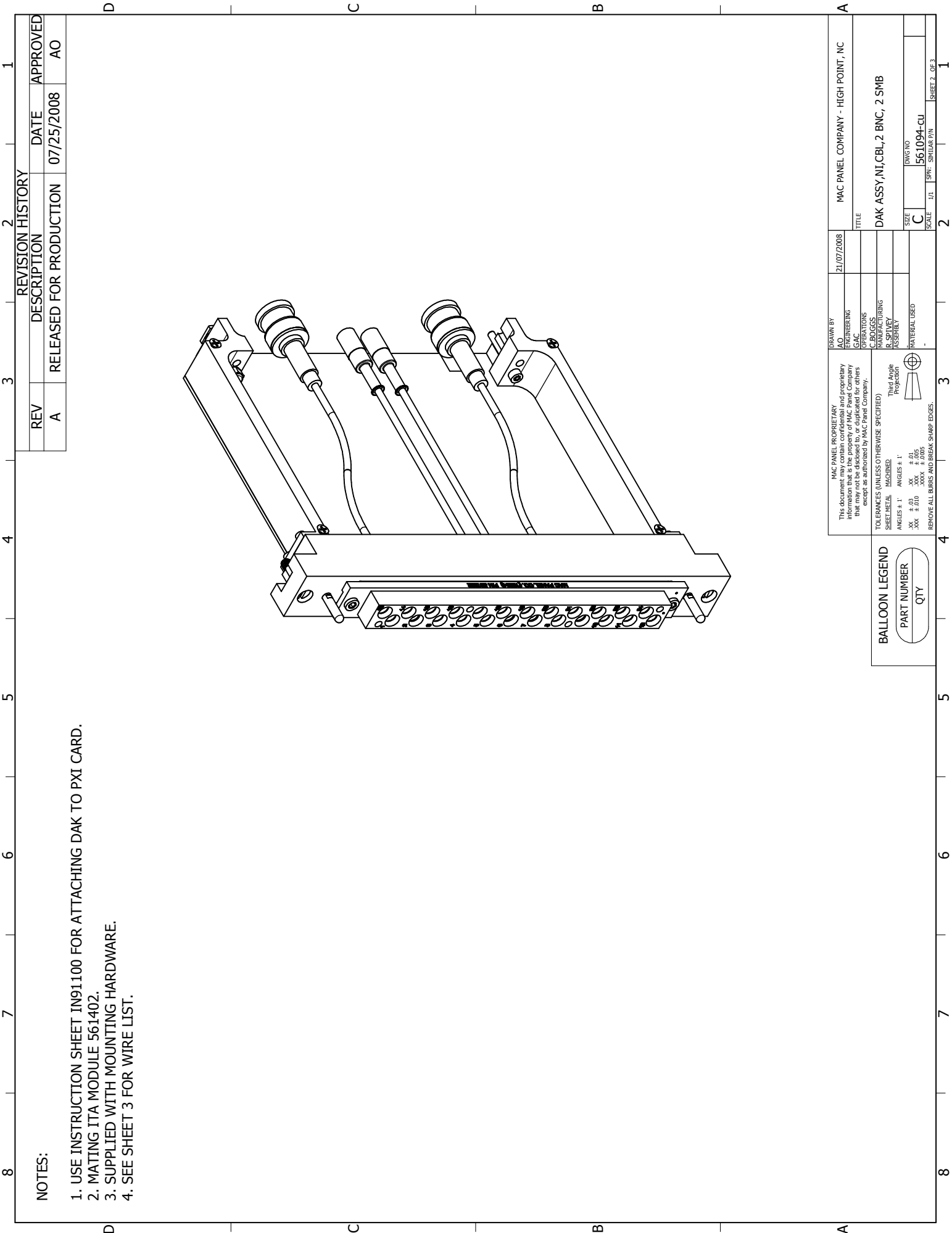
DRAWN BY AC ENGINEERING GAC		21/07/2008	MAC PANEL COMPANY - HIGH POINT, NC	
OPERATIONS CIBOUGGS			TITLE DAK ASSY, NI, CBL, 2 BNC, 2 SMB	
MANUFACTURING ASSEMBLY			SIZE C	
MATERIAL USED			DWG NO. 561094-CU	
			SCALE 1:1	
			SHEET 1 OF 3	

BALLOON LEGEND	
PART NUMBER	QTY

MAC PANEL PROPRIETARY
This document may contain confidential and proprietary information. It is the property of MAC Panel Company and may not be disclosed, copied, or duplicated for other purposes except as authorized by MAC Panel Company.

TOLERANCES (UNLESS OTHERWISE SPECIFIED)
SHEET METAL DIMENSIONS
ANGLES ± 1° ANGLES ± 1'
XXX ± .01
XX ± .010
XX ± .005
REMOVE ALL BURRS AND BREAK SHARP EDGES.

Third Angle Projection

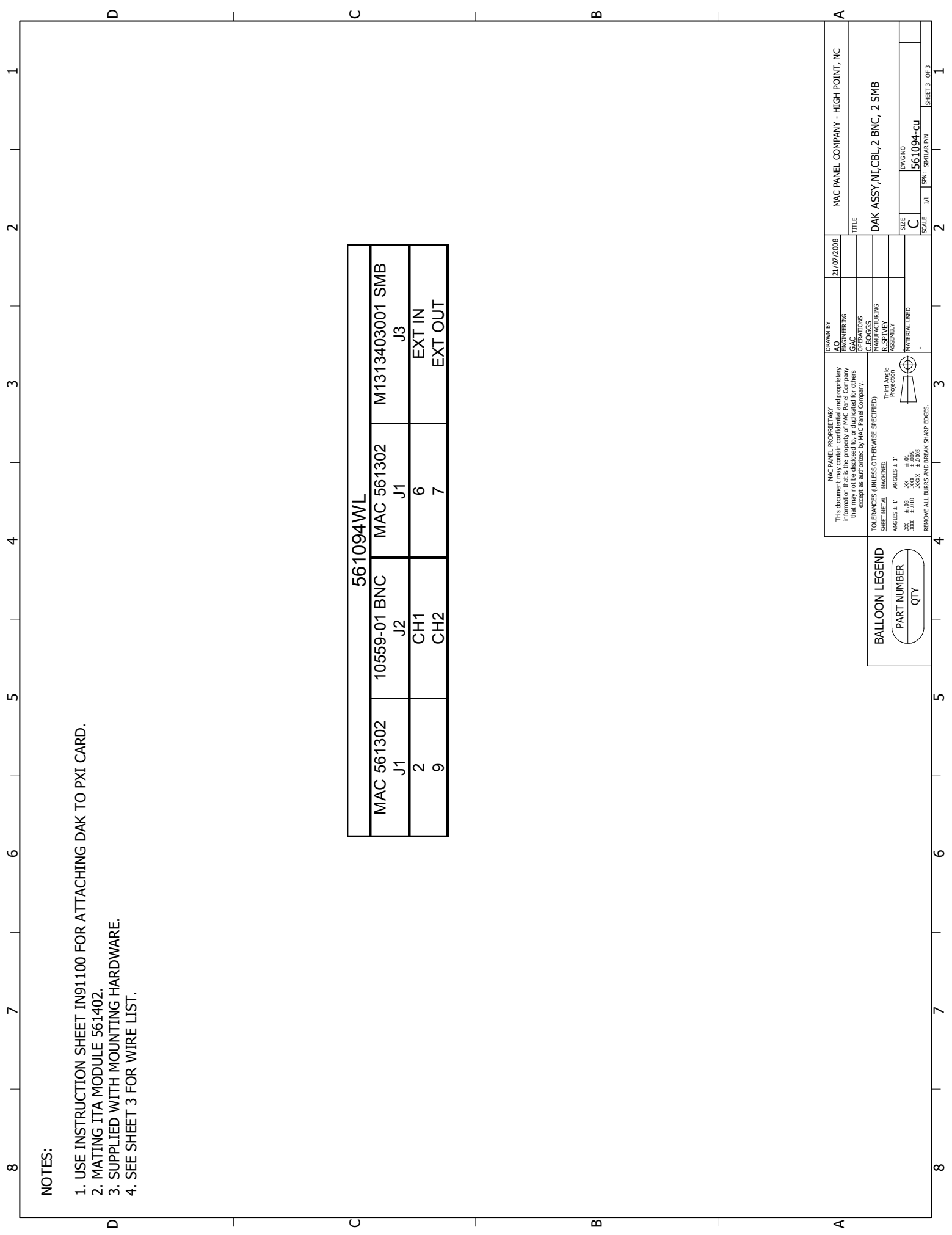


NOTES:

1. USE INSTRUCTION SHEET IN91100 FOR ATTACHING DAK TO PXI CARD.
2. MATING ITA MODULE 561402.
3. SUPPLIED WITH MOUNTING HARDWARE.
4. SEE SHEET 3 FOR WIRE LIST.

REVISION HISTORY			
REV	DESCRIPTION	DATE	APPROVED
A	RELEASED FOR PRODUCTION	07/25/2008	AO

<p>MAC PANEL PROPRIETARY <small>This document may contain confidential and proprietary information. It is the property of MAC Panel Company and is not to be distributed or duplicated for others except as authorized by MAC Panel Company.</small></p>		<p>21/07/2008</p>	<p>MAC PANEL COMPANY - HIGH POINT, NC</p>				
<p>MAC PANEL PROPRIETARY <small>This document may contain confidential and proprietary information. It is the property of MAC Panel Company and is not to be distributed or duplicated for others except as authorized by MAC Panel Company.</small></p>		<p>AC ENGINEERING GAC OPERATIONS CROGGGS MANUFACTURING ASSEMBLY MATERIAL USED</p>	<p>TITLE DAK ASSY,NI,CBL,2 BNC, 2 SMB</p>				
<p>TOLERANCES (UNLESS OTHERWISE SPECIFIED) ANGLES ± 1° .XX ± .01 .XXX ± .010 .XXXX ± .005</p>		<p>Third Angle Projection</p>	<p>SIZE C</p>				
<p>SHEET METAL TOLERANCES ANGLES ± 1° .XX ± .01 .XXX ± .010 .XXXX ± .005</p>		<p>REMOVE ALL BURRS AND BREAK SHARP EDGES.</p>	<p>SCALE: 1:1 SPR: SIMILAR PIN</p>				
<p>BALLOON LEGEND</p> <table border="1"> <thead> <tr> <th>PART NUMBER</th> <th>QTY</th> </tr> </thead> <tbody> <tr> <td> </td> <td> </td> </tr> </tbody> </table>		PART NUMBER	QTY			<p>2</p>	<p>1</p>
PART NUMBER	QTY						



NOTES:

- 1. USE INSTRUCTION SHEET IN91100 FOR ATTACHING DAK TO PXI CARD.
- 2. MATING ITA MODULE 561402.
- 3. SUPPLIED WITH MOUNTING HARDWARE.
- 4. SEE SHEET 3 FOR WIRE LIST.

56 1094WL					
MAC 561302	10559-01 BNC	MAC 561302	M1313403001 SMB		
J1	J2	J1	J3		
2	CH1	6	EXT IN		
9	CH2	7	EXT OUT		

DRAWN BY AC ENGINEERING GAC		21/07/2008		MAC PANEL COMPANY - HIGH POINT, NC			
MAC PANEL PROPRIETARY This document may contain confidential and proprietary information that is not to be reproduced, copied, or disseminated in any form or by any means, except as authorized by MAC Panel Company.		OPERATIONS		TITLE			
CIRCUITS		MANUFACTURING		DAK ASSY,NI,CBL,2 BNC, 2 SMB			
MATERIAL USED				SIZE C			
BALLOON LEGEND		Third Angle Projection		SCALE		SHEET 3 OF 3	
PART NUMBER QTY						561094-CU	
						I/L	
						SPN: SIMILAR P/N	
						1	