

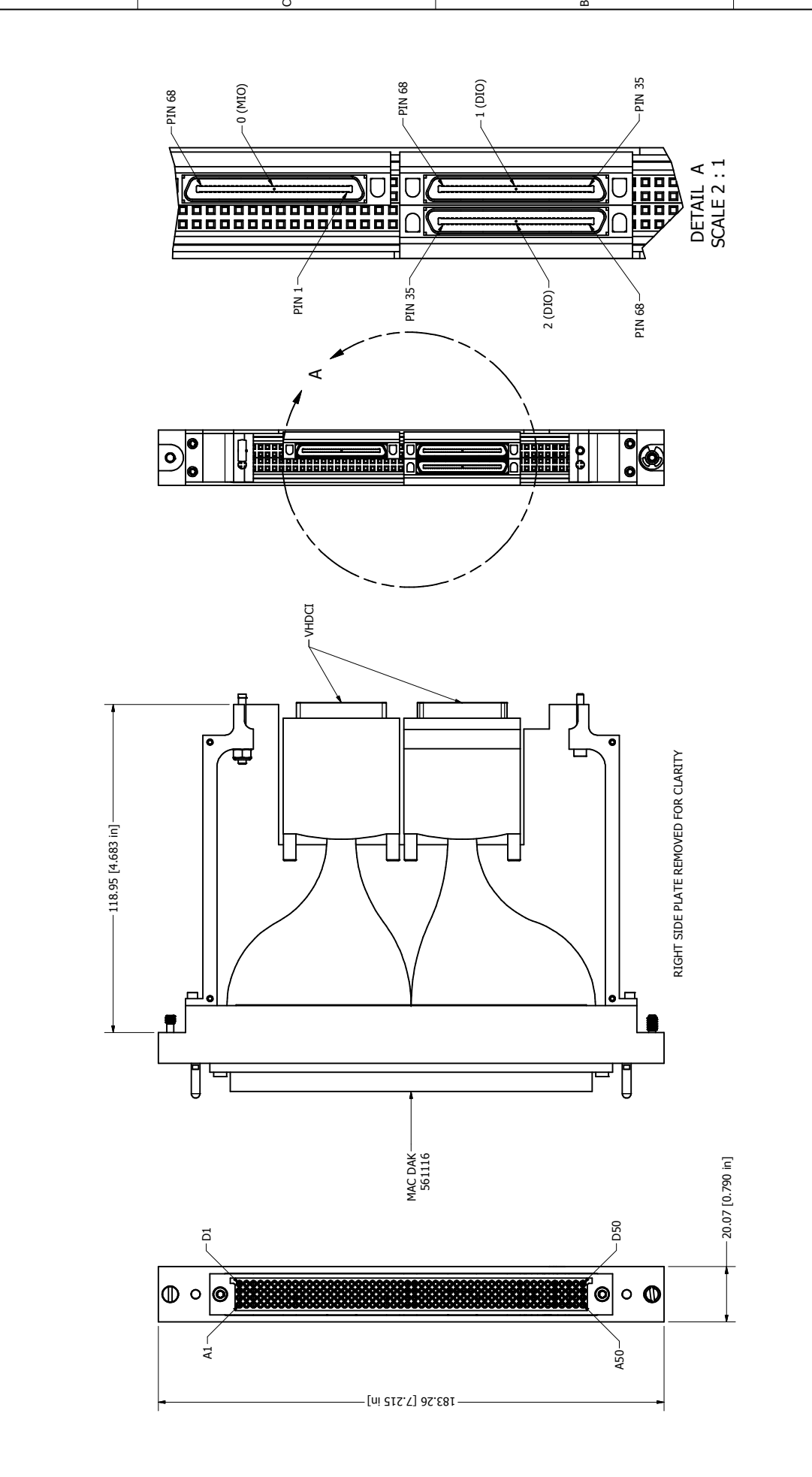
REV	DESCRIPTION	DATE	APPROVED
A	RELEASE FOR PRODUCTION	12/12/2007	WKM

REVISION HISTORY	
2	RELEASE FOR PRODUCTION

REV	DESCRIPTION	DATE	APPROVED
A	RELEASE FOR PRODUCTION	12/12/2007	WKM

NOTES:

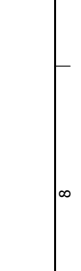
1. USE INSTRUCTION SHEET IN911100 FOR ATTACHING DAK TO PXI CARD.
2. RECEIVER/ITA MODULE TO BE KEYPED ON RIGHT SIDE.
3. MATING ITA MODULE P/N 561403.
4. SUPPLIED WITH MOUNTING HARDWARE.
5. SEE SHEET 3 FOR WIRE LIST.



DRAWN BY WKM ENGINEERING		06/12/2007	MAC PANEL COMPANY - HIGH POINT, NC	
GAC		12/12/2007	TITLE	
OPERATIONS C. BOGGS		12/12/2007	DAK ASSY, SCOUT, PXI-7831R	
MANUFACTURING R. SPIVEY		12/12/2007	SIZE C	
ASSEMBLY			DWG NO 561116-CU	
MATERIAL USED			SCALE 1/1	
			SPR: 561048	
			SHEET 1 OF 3	

MAC PANEL PROPRIETARY  
This document may contain confidential and proprietary information that is the property of MAC Panel Company that may not be disclosed to, or duplicated for others except as authorized by MAC Panel Company.

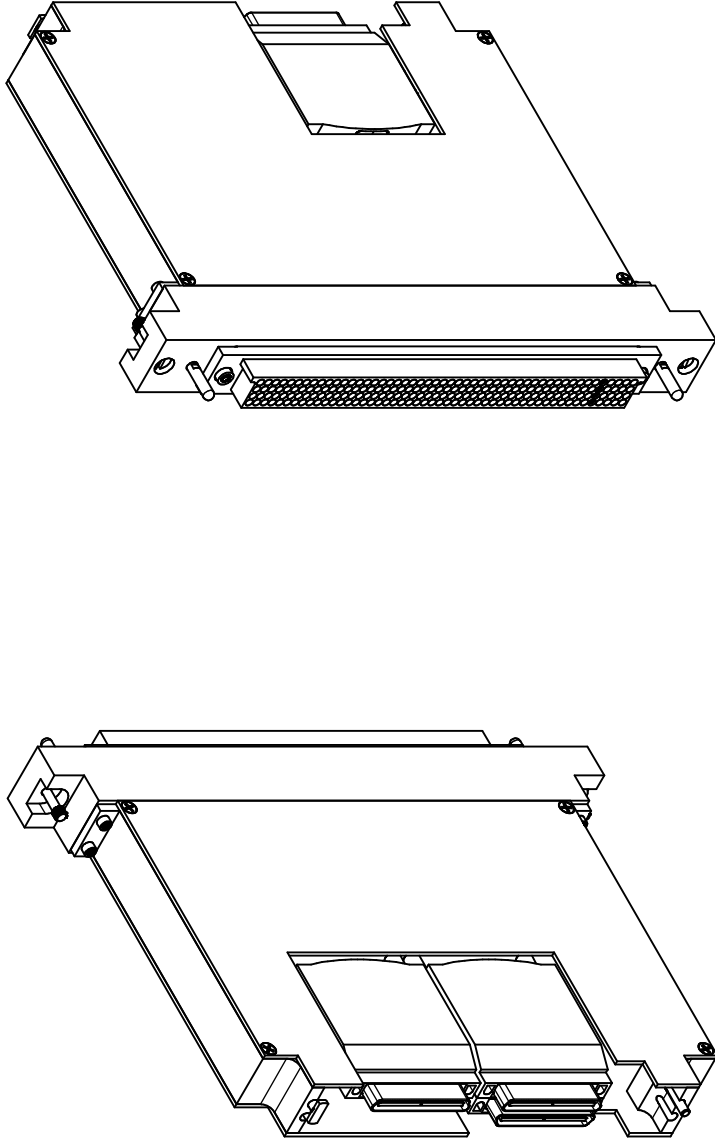
TOLEANCES (UNLESS OTHERWISE SPECIFIED)  
SHEET METAL MACHINED  
ANGLES ± 1°  
± .03  
XX ± .05  
.00X ± .010  
.XXXX ± .0005  
REMOVE ALL BURRS AND BREAK SHARP EDGES.



BALLOON LEGEND
PART NUMBER
QTY

NOTES:

1. USE INSTRUCTION SHEET IN91100 FOR ATTACHING DAK TO PXI CARD.
2. RECEIVER/ITA MODULE TO BE KEYPED ON RIGHT SIDE.
3. MATING ITA MODULE P/N 561403.
4. SUPPLIED WITH MOUNTING HARDWARE.
5. SEE SHEET 3 FOR WIRE LIST.



BALLOON LEGEND

PART NUMBER	QTY

MAC PANEL PROPRIETARY  
 This document may contain confidential and proprietary information that is the property of MAC Panel Company that may not be disclosed to, or duplicated for others except as authorized by MAC Panel Company.

TOOLERANCES (UNLESS OTHERWISE SPECIFIED)

SHEET METAL	MACHINED	ANGLES ± 1°
± .02	± .01	± .01
.XX	.XX	.XXXX
.XXX	.XXX	.XXXX
		± .0005



REMOVE ALL BURRS AND BREAK SHARP EDGES.

DRAWN BY WIKM ENGINEERING GAC	06/12/2007 12/12/2007 12/12/2007	MAC PANEL COMPANY - HIGH POINT, NC
OPERATIONS C. BOGGS		TITLE
MANUFACTURING R. SPIVEY		DAK ASSY, SCOUT, PXI-7831R
ASSEMBLY		SIZE C
MATERIAL USED		DWG NO 561116-CU
		SCALE 1/1
		SPR: 561048
		SHEET 2 OF 3

NOTES:

1. USE INSTRUCTION SHEET IN91100 FOR ATTACHING DAK TO PXI CARD.
2. RECEIVER/ITA MODULE TO BE KEVED ON RIGHT SIDE.
3. MATING ITA MODULE P/N 561403.
4. SUPPLIED WITH MOUNTING HARDWARE.
5. SEE SHEET 3 FOR WIRE LIST.

MAC DAK 561116	PXI - 7831R 0/MIO VHDCI	MAC DAK 561116	PXI - 7831R 0/MIO VHDCI	MAC DAK 561116	PXI - 7831R 0/MIO VHDCI	MAC DAK 561116	PXI - 7831R 0/MIO VHDCI
A1	68	B1	52	C1	36	D1	20
A2	67	B2	51	C2	35	D2	19
A3	66	B3	50	C3	34	D3	18
A4	65	B4	49	C4	33	D4	17
A5	64	B5	48	C5	32	D5	16
A6	63	B6	47	C6	31	D6	15
A7	62	B7	46	C7	30	D7	14
A8	61	B8	45	C8	29	D8	13
A9	60	B9	44	C9	28	D9	12
A10	59	B10	43	C10	27	D10	11
A11	58	B11	42	C11	26	D11	10
A12	57	B12	41	C12	25	D12	9
A13	56	B13	40	C13	24	D13	8
A14	55	B14	39	C14	23	D14	7
A15	54	B15	38	C15	22	D15	2,3,4,5,6
A16	53	B16	37	C16	21	D16	1

MAC DAK 561116	PXI - 7831R 1/DIO VHDCI	MAC DAK 561116	PXI - 7831R 1/DIO VHDCI	MAC DAK 561116	PXI - 7831R 2/DIO VHDCI	MAC DAK 561116	PXI - 7831R 2/DIO VHDCI
A17	68	B17	34	C17	1	D17	35
A18	67	B18	33	C18	2	D18	36
A19	66	B19	32	C19	3	D19	37
A20	65	B20	31	C20	4	D20	38
A21	64	B21	30	C21	5	D21	39
A22	63	B22	29	C22	6	D22	40
A23	62	B23	28	C23	7	D23	41
A24	61	B24	27	C24	8	D24	42
A25	60	B25	26	C25	9	D25	43
A26	59	B26	25	C26	10	D26	44
A27	58	B27	24	C27	11	D27	45
A28	57	B28	23	C28	12	D28	46
A29	56	B29	22	C29	13	D29	47
A30	55	B30	21	C30	14	D30	48
A31	54	B31	20	C31	15	D31	49
A32	53	B32	19	C32	16	D32	50
A33	52	B33	18	C33	17	D33	51
A34	51	B34	17	C34	18	D34	52
A35	50	B35	16	C35	19	D35	53
A36	49	B36	15	C36	20	D36	54
A37	48	B37	14	C37	21	D37	55
A38	47	B38	13	C38	22	D38	56
A39	46	B39	12	C39	23	D39	57
A40	45	B40	11	C40	24	D40	58
A41	44	B41	10	C41	25	D41	59
A42	43	B42	9	C42	26	D42	60
A43	42	B43	8	C43	27	D43	61
A44	41	B44	7	C44	28	D44	62
A45	40	B45	6	C45	29	D45	63
A46	39	B46	5	C46	30	D46	64
A47	38	B47	4	C47	31	D47	65
A48	37	B48	3	C48	32	D48	66
A49	36	B49	2	C49	33	D49	67
A50	35	B50	1	C50	34	D50	68

<p><b>BALLOON LEGEND</b></p> <table border="1"> <tr> <td>PART NUMBER</td> <td></td> </tr> <tr> <td>QTY</td> <td></td> </tr> </table>	PART NUMBER		QTY		<p>MAC PANEL PROPRIETARY</p> <p>This document may contain confidential and proprietary information that is the property of MAC Panel Company that may not be disclosed to, or duplicated for others except as authorized by MAC Panel Company.</p>	<p>DRAWN BY</p> <p>WIKM</p> <p>ENGINEERING</p> <p>GAC</p> <p>OPERATIONS</p> <p>C. BOGGS</p> <p>MANUFACTURING</p> <p>R. SPIVEY</p> <p>ASSEMBLY</p> <p>MATERIAL USED</p> <p>-</p>	<p>DATE</p> <p>06/12/2007</p> <p>12/12/2007</p> <p>12/12/2007</p> <p>12/12/2007</p>	<p>COMPANY</p> <p>MAC PANEL COMPANY - HIGH POINT, NC</p>
	PART NUMBER							
QTY								
<p>TOLERANCES (UNLESS OTHERWISE SPECIFIED)</p> <p>SHEET METAL MACHINED</p> <p>ANGLES ± 1°</p> <p>± .03</p> <p>.XX ± .05</p> <p>.XXX ± .010</p> <p>± .005</p> <p>± .006</p> <p>± .005</p> <p>± .005</p> <p>THIRD ANGLE PROJECTION</p> <p>REMOVE ALL BURRS AND BREAK SHARP EDGES.</p>	<p>TITLE</p> <p>DAK ASSY, SCOUT, PXI-7831R</p> <p>SIZE</p> <p>C</p> <p>DWG NO</p> <p>561116-CU</p> <p>SCALE</p> <p>1/1</p> <p>SPR: 561048</p>	<p>SHEET 3 OF 3</p>						