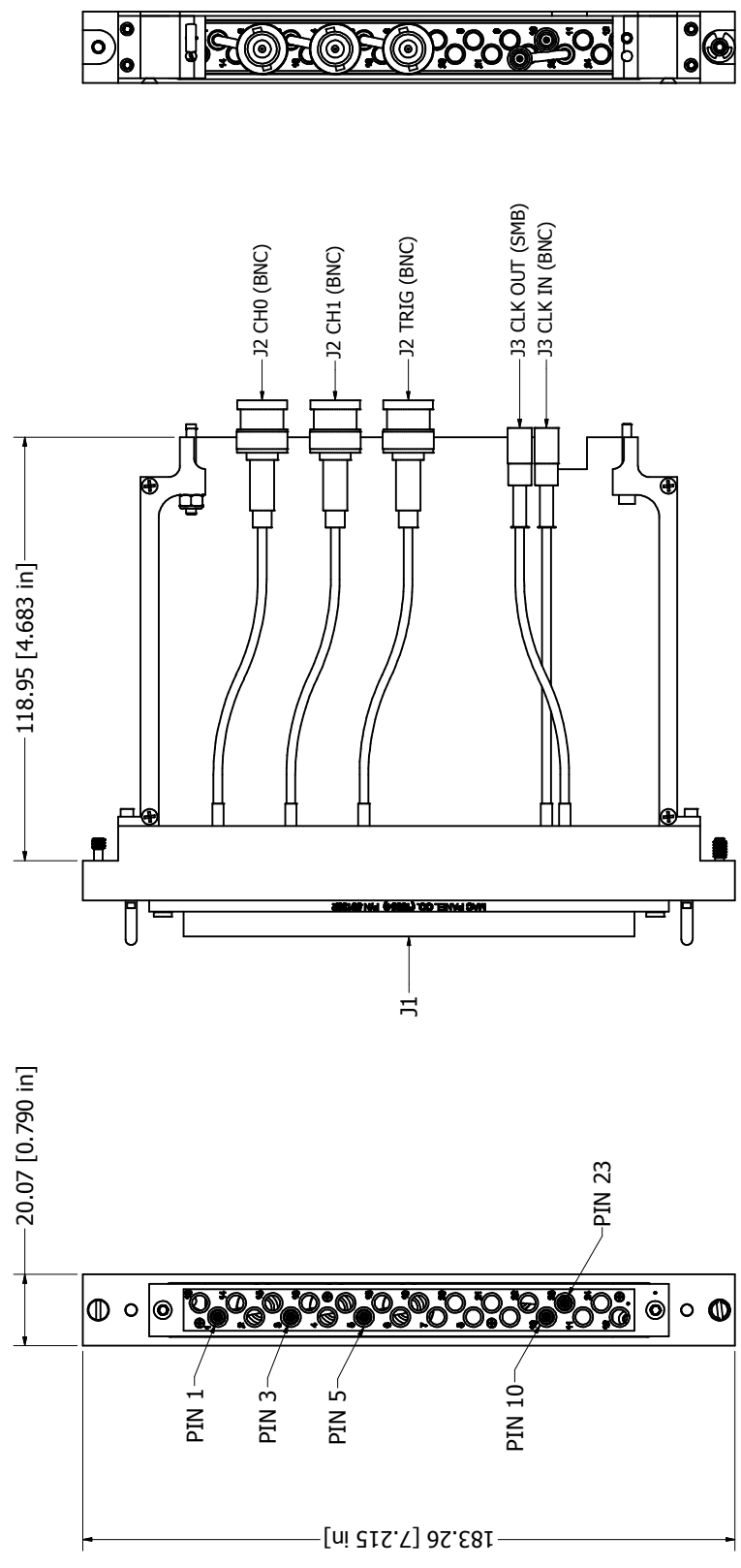


REVISION HISTORY	
REV	DESCRIPTION
A	RELEASED FOR PRODUCTION
	DATE: 03/26/2008
	APPROVED: AO

D 1 2 3 4 5 6 7 8

NOTES:
 1. USE INSTRUCTION SHEET IN91100 FOR ATTACHING DAK TO PXI CARD
 2. MATING ITA MODULE P/N 561402.
 3. SUPPLIED WITH MOUNTING HARDWARE.
 4. SEE SHEET 3 FOR WIRE LIST.



DRAWN BY		24/03/2008		MAC PANEL COMPANY - HIGH POINT, NC	
AC	ENGINEERING				
GAC	OPERATIONS				
C	BOSSGS				
	MANUFACTURING				
	ASSEMBLY				
	MATERIAL USED				
TITLE					
DAK ASSY, NI, CBL, 3 BNC, 2 SMB					
	SIZE				
	C				
	DRAWING NO				
	561044-CU				
	SCALE	1:1	SPR	SIMILAR P/N	
					SHEET 1 OF 3

MAC PANEL PROPRIETARY
 This document may contain confidential and proprietary information. It is the property of MAC Panel Company and is not to be reproduced, stored in a retrieval system, or transmitted in any form or by any means, except as authorized by MAC Panel Company.

TOLERANCES (UNLESS OTHERWISE SPECIFIED)
 SHEET METAL DIMENSIONS
 ANGLES ± 1°
 .XX ± .01
 .XXX ± .010
 .XXX ± .005

Third Angle Projection

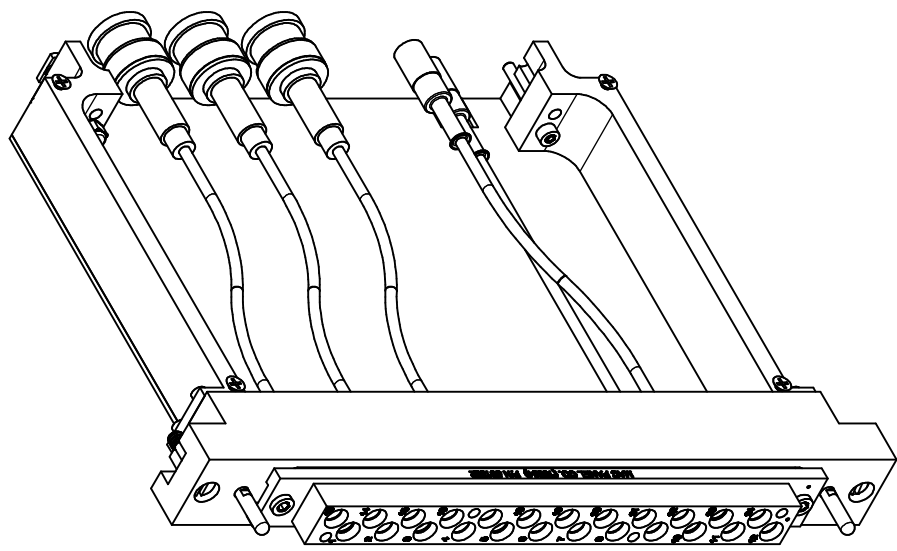
REMOVE ALL BURRS AND BREAK SHARP EDGES.

BALLOON LEGEND	
PART NUMBER	QTY

REVISION HISTORY			
REV	DESCRIPTION	DATE	APPROVED
A	RELEASED FOR PRODUCTION	03/26/2008	AO

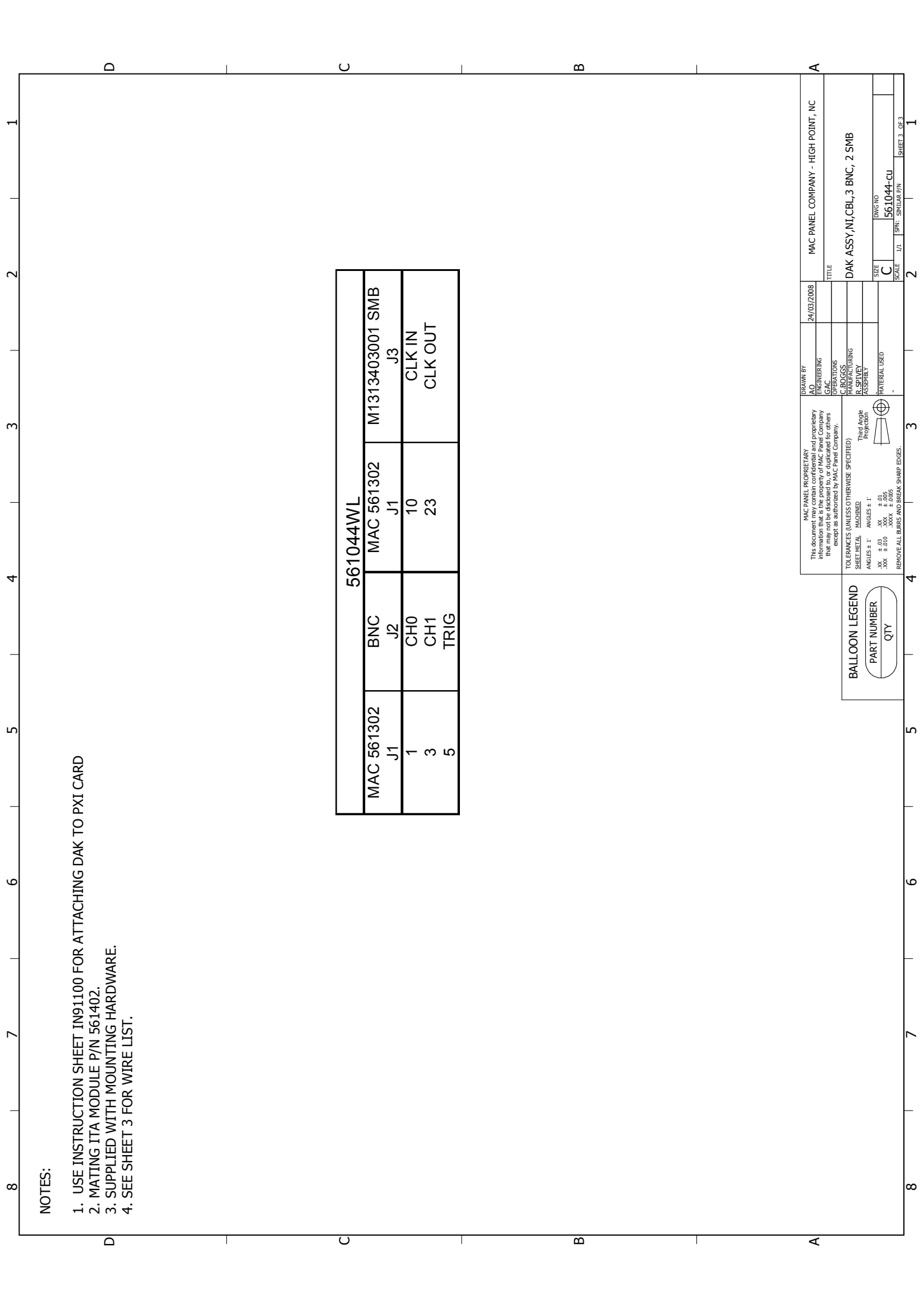
D C B A

- NOTES:
1. USE INSTRUCTION SHEET IN91100 FOR ATTACHING DAK TO PXI CARD
 2. MATING ITA MODULE P/N 561402.
 3. SUPPLIED WITH MOUNTING HARDWARE.
 4. SEE SHEET 3 FOR WIRE LIST.



<p>MAC PANEL PROPRIETARY This document may contain confidential and proprietary information. It is not to be distributed or duplicated for others except as authorized by MAC Panel Company.</p> <p>TOL BRANCES (UNLESS OTHERWISE SPECIFIED) SHEET METAL ANGLES: .XX ± .01, .XXX ± .010, .XXX ± .005 ANGLES ± 1° THIRD ANGLE PERSPECTIVE REMOVE ALL BURRS AND BREAK SHARP EDGES.</p>	<p>MAC PANEL COMPANY - HIGH POINT, NC</p>
<p>MAC PANEL PROPRIETARY This document may contain confidential and proprietary information. It is not to be distributed or duplicated for others except as authorized by MAC Panel Company.</p>	<p>24/03/2008</p>
<p>DRAWN BY AC ENGINEERING GAC</p>	<p>TITLE DAK ASSY, NI, CBL, 3 BNC, 2 SMB</p>
<p>OPERATIONS C. BOGGS</p>	<p>SIZE C</p>
<p>MANUFACTURING MAC PANEL COMPANY</p>	<p>SCALE 1:1</p>
<p>MATERIAL USED -</p>	<p>SPR. SIMILAR P/N</p>

BALLOON LEGEND	
PART NUMBER	QTY

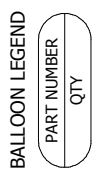


NOTES:

1. USE INSTRUCTION SHEET IN91100 FOR ATTACHING DAK TO PXI CARD
2. MATING ITA MODULE P/N 561402.
3. SUPPLIED WITH MOUNTING HARDWARE.
4. SEE SHEET 3 FOR WIRE LIST.

561044WL		
MAC 561302 J1	BNC J2	MAC 561302 J1
1	CH0	10
3	CH1	23
5	TRIG	CLK IN CLK OUT

MAC PANEL PROPRIETARY	24/03/2008	MAC PANEL COMPANY - HIGH POINT, NC
<small>This document may contain confidential and proprietary information. It is the property of MAC Panel Company and is not to be reproduced, stored in a retrieval system, or transmitted in any form or by any means, electronic, mechanical, photocopying, recording, or by any information storage and retrieval system, without the prior written permission of MAC Panel Company.</small>		
DRAWN BY AC ENGINEERING OPERATIONS		TITLE
CHECKED BY C.BROGGS		DAK ASSY,NI,CBL,3 BNC, 2 SMB
MANUFACTURING ASSEMBLY		SCALE
MATERIAL USED		SIZE
		C
		DATE
		561044-CU
		SPR. SIMILAR P/N
		1
		2
		3
		4
		5
		6
		7
		8



TOLERANCES (UNLESS OTHERWISE SPECIFIED)

SHEET METAL DIMENSIONS

ANGLES ± 1°

ANGLES ± .01°

ANGLES ± .001°

ANGLES ± .0005°

REMOVE ALL BURRS AND BREAK SHARP EDGES.

