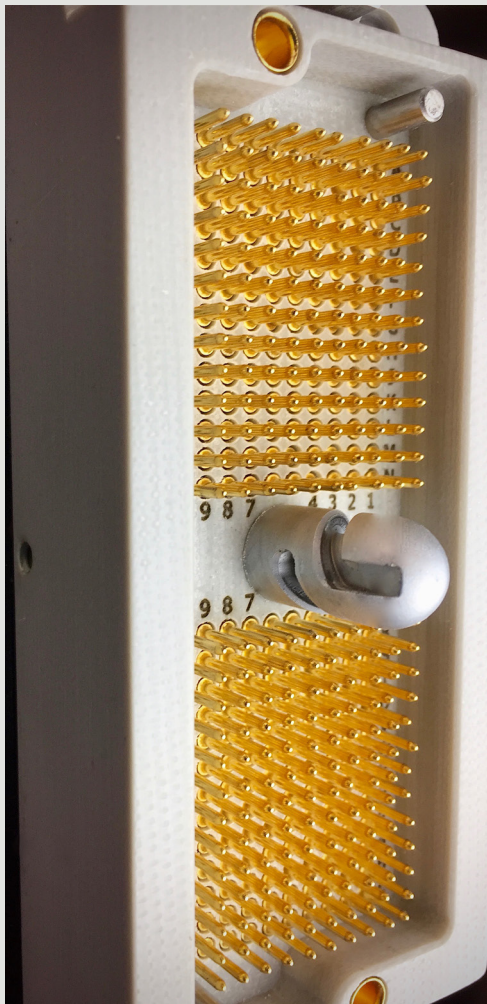




THE PINNACLE OF CONNECTOR PERFORMANCE

A ROBUST CONNECTOR FOR THE MOST
DEMANDING "REAL LIFE" TEST AND
MEASUREMENT APPLICATIONS

Contact Us Now:
applications@macpanel.com
www.macpanel.com



What Makes APEX So Different?

Unique Contact Technology

At the heart of APEX performance is MAC Panel's unique 1mm signal contacts. With a 1mm cross section it offers superior electrical performance over traditional 0.6mm contacts and is significantly stronger; more than 300% stronger, making it far less susceptible to damage in the real world.

Customer Benefits In Using APEX:

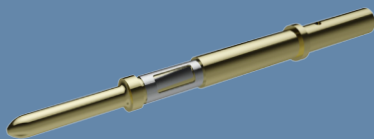
- Almost Impossible to Damage During Normal Use
- Better Signal Integrity
- Tooling Pins for Precise Connector Alignment
- Simple Half Turn Engagement
- Robust Design Machined from High Quality Epoxy

Flexible Options

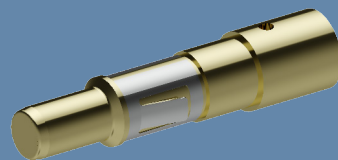
With many configuration options to choose from such as contacts, back shell, mounting styles and density variations, APEX is one of the most customizable small-foot-print connectors in the field of electronic test.

Contact Configurations

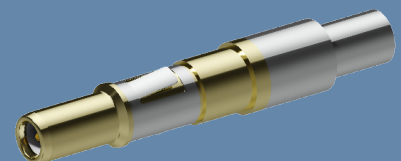
In addition to the high density 1mm signal contact, APEX is also available in hybrid I/O configuration utilizing our micro-power and micro-coax contacts.



1mm Signal contact
5 amps continuous



Micro-power contact
-25 amps continuous



Micro-coax contact
-2GHz 50 ohms

THE PINNACLE OF CONNECTOR PERFORMANCE



Back Shell Configuration

A recurring theme in our market research has been user frustration with poorly designed back shells that added to build times, had poor cable management features and were vulnerable to damage. The highly durable APEX aluminum back shell allows the wiring to be performed with the cable clamp in position if required. The main cover is easily removed for easy access during build and maintenance; this can be of particular benefit during the debug process since it allows access to the cables and contacts while the APEX connector is in-situ.



Straight Through Back Shell



90 Degree Back Shell



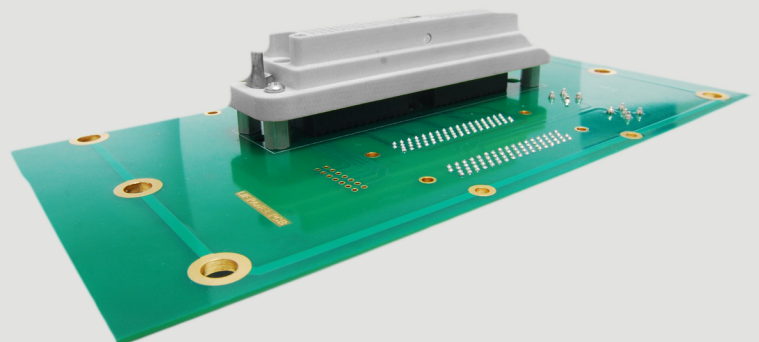
Back Shell Removed

Mounting Configuration

All APEX plugs and sockets have the option of using either cable connections or mounting to a PCB, offering maximum design flexibility. APEX 1mm contacts accept 20awg to 24 awg cable sizes. The APEX PCB modules and contacts have been designed to maximize the available space for circuit trace routing. It is possible to mix and match connection styles.



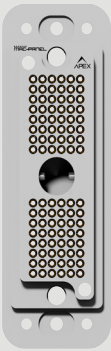
Cabled Connection with 24 awg cables



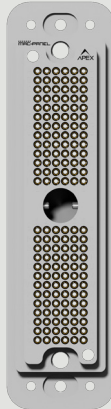
PCB Connection

Density Configuration

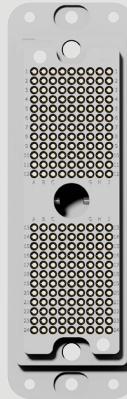
96



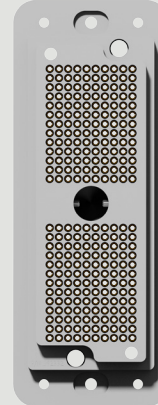
156



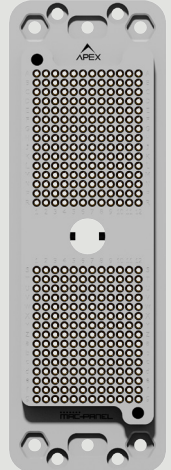
216



260



360



80/20
Hybrid



220/20
Hybrid



What Does Your APEX Look Like?

With so many different configurations, APEX is truly one of the most customizable small footprint connectors. If you have a special requirement, our team of application specialists and engineers will work with you to provide the best solutions for your needs. Contact us now at applications@macpanel.com to get started.