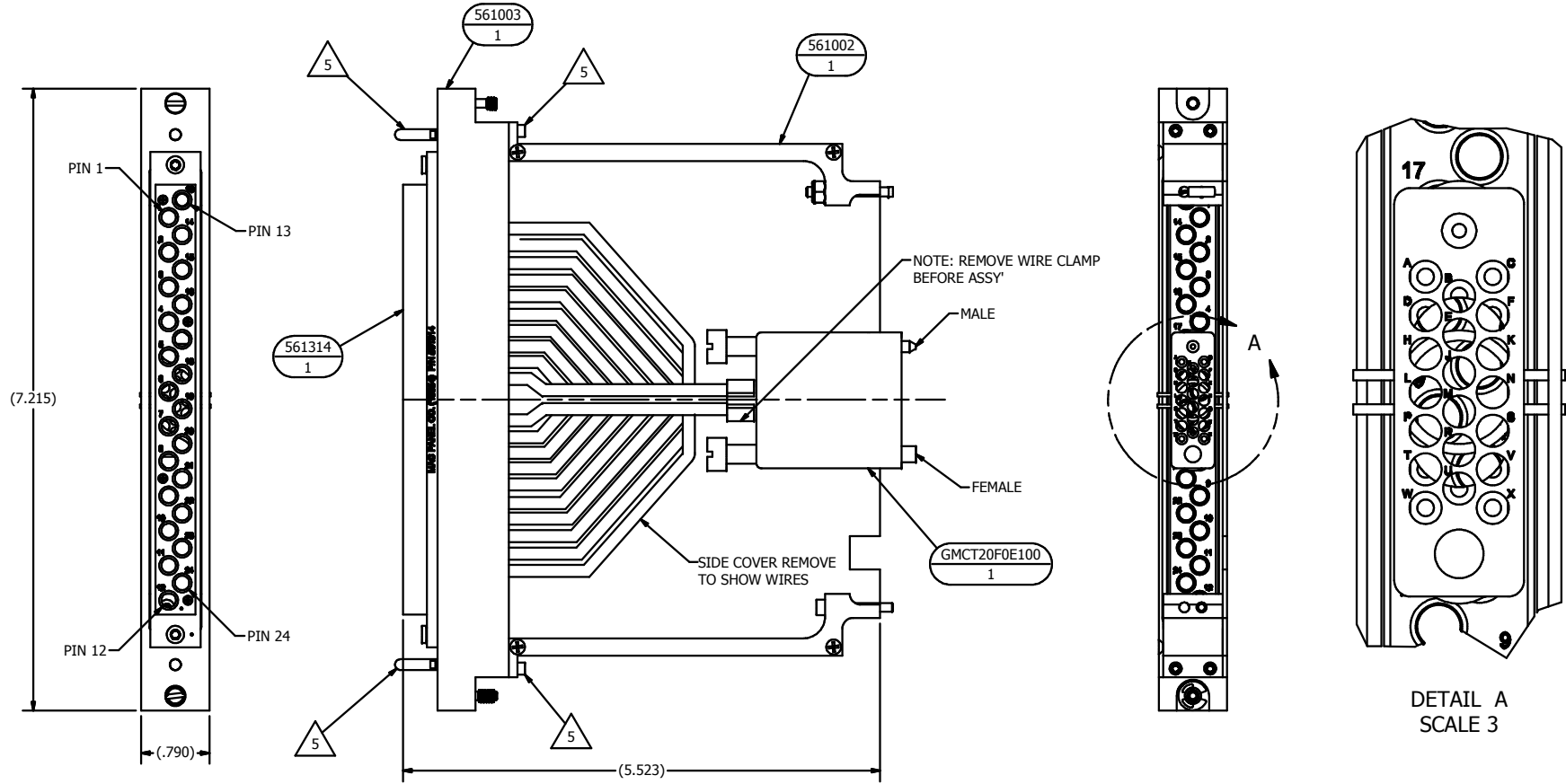


REVISION HISTORY			
REV	DESCRIPTION	DATE	APPROVED
A	RELEASED FOR PRODUCTION	12/11/2007	AO

NOTES:

1. USE INSTRUCTION SHEET IN91100 FOR ATTACHING DAK TO PXI CARD
2. MATING ITA MODULE P/N 561414
3. WIRE PER 561142WL
4. BAG AND TAG P/N 5510941, 5510991, 440E9230.
5. INSTALL P/N 5510530 2X AND 256D45 4X USING P/N 10589-02 PURPLE LOCTITE #222 AS INDICATED.



DETAIL A
SCALE 3

BALLOON LEGEND	
PART NUMBER	QTY
561003	1
561002	1
561314	1
GMCT20F0E100	1

MAC PANEL PROPRIETARY
This document may contain confidential and proprietary information that is the property of MAC Panel Company that may not be disclosed to, or duplicated for others except as authorized by MAC Panel Company.

TOLERANCES (UNLESS OTHERWISE SPECIFIED)
SHEET METAL MACHINED
ANGLES ± 1° ANGLES ± 1°
XX ± .03 XX ± .01
.XXX ± .010 .XXX ± .005
XXXX ± .0005

REMOVE ALL BURRS AND BREAK SHARP EDGES.

Third Angle Projection

DRAWN BY
AO
12/10/2007

ENGINEERING
GAC
OPERATIONS
C BOGGS

MANUFACTURING
R SPIVEY
ASSEMBLY

MATERIAL USED
-

MAC PANEL COMPANY - HIGH POINT, NC

TITLE
DAK ASSY, SCOUT, PXI-2585/2586

SIZE
C

DWG NO
561142

SCALE 1/1 SPR: SIMILAR P/N SHEET 1 OF 1

MAC 561314 J1	GMCT20F0E100 J2
1	A
2	B
3	C
4	D
5	E
6	F
7	H
8	J
9	K
10	L
11	M
12	N
13	P
14	R
15	S
16	T
17	U
18	V
19	W
20	X